



masterplan _ Pallieterlandscap _ Lier _ Belgium

LIFE

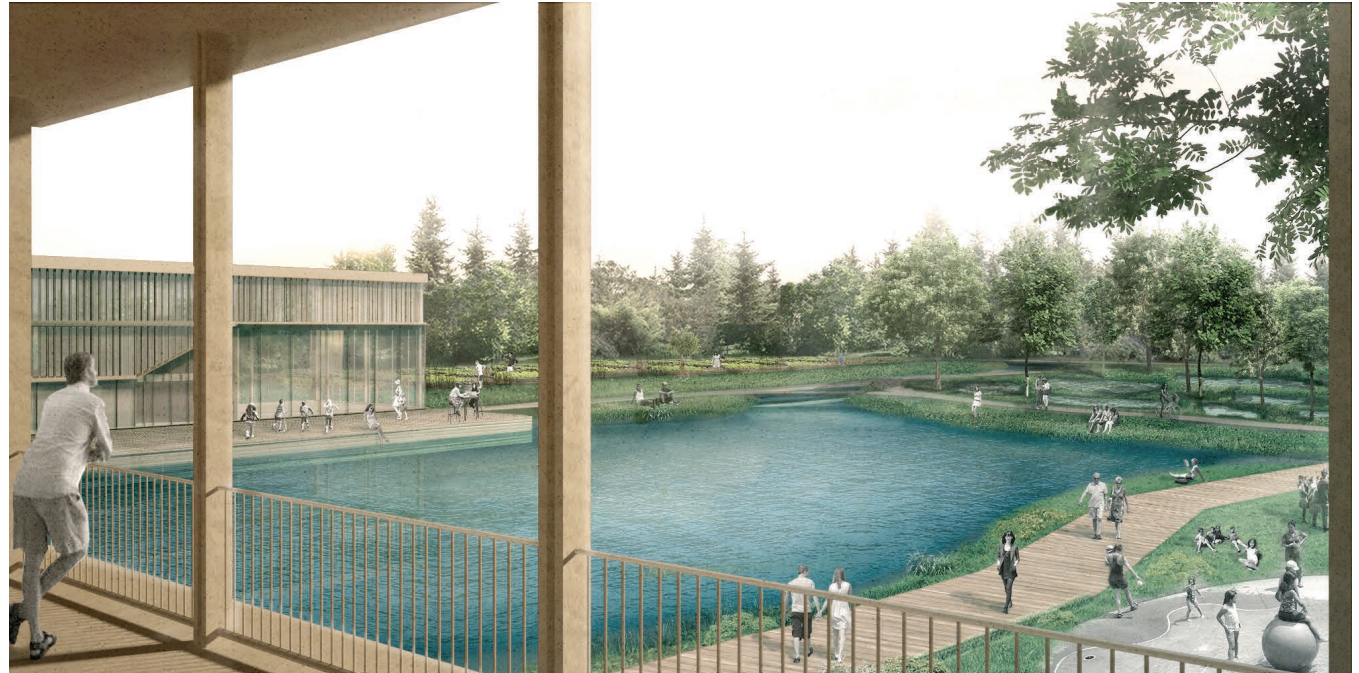
- mixed residential recreation environment
- _ focus on the experience of blue-green carpet
- _ differentiation of green rooms (from designed park to natural forest)
- _ focus on soft mobility connections

PEOPLE

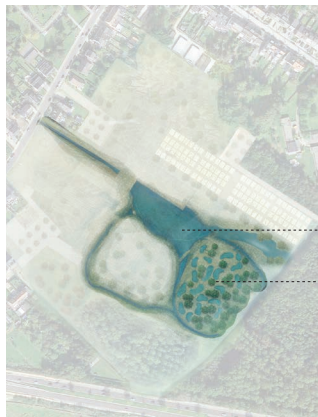
- diversity of people
- _ living + relaxing

SPACE

- site _ 10 ha
- development:
 - _ residential (12.000 m²)
 - _ commercial / public functions (2.000 m²)
- F/T: 0,05
- V/T: 0,13



EXPERIENCING A BLUE-GREEN CARPET



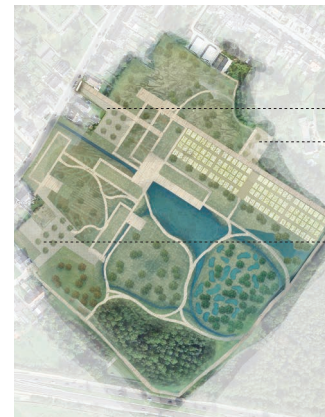
- water basin
- water forest

blue vein



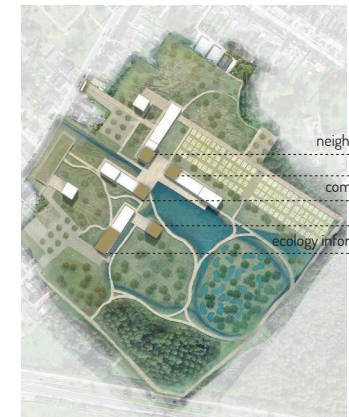
- park forest
- allotments
- park forest
- water forest
- play forest
- orchard
- buffer forest

mosaic of green rooms



- parking
- parking
- parking

soft and hard mobility



- neighborhood store
- restaurant
- community house
- cafe
- ecology information center

built program